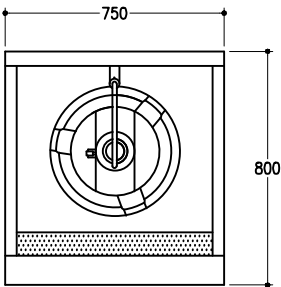
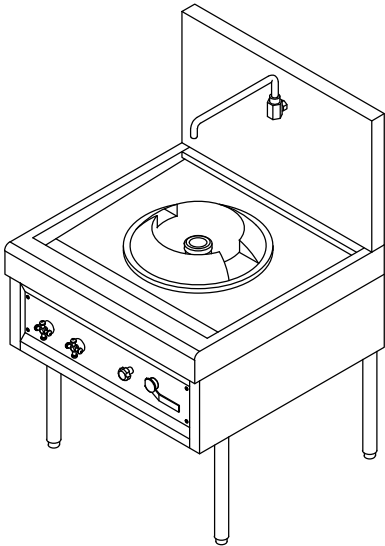
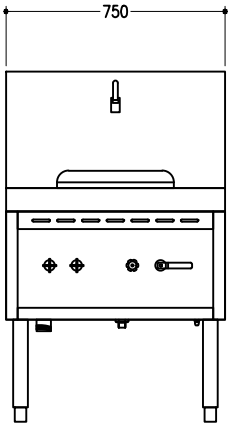


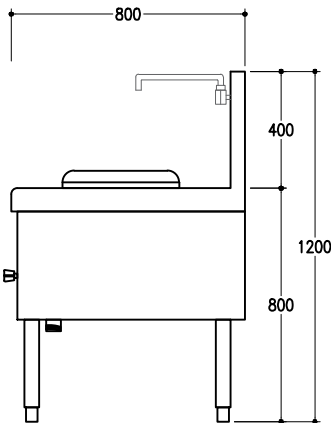
GAS KWALI RANGE 1 BURNER



TOP VIEW



FRONT VIEW



SIDE VIEW

DESCRIPTION

Code Item	GKR-1B
Main Function	Introducing our Gas Kwali Range 1 Burner, a versatile addition to any kitchen! With Cantonese wok chambers boasting cast iron rings and 36.6 Kw/Hr burners, it's perfect for cooking stir fry, soup, tempura, or boiling noodles swiftly, Ideal for Asian Restaurants and various establish-ments! . Powered with 1 burners, Total of 36.6 Kw/Hr. Cold Water Supply with Swivel Faucets. Mounted on the BackSplash. Suitable for Wok-Pan Sizes 14-18"(355-457mm). Adjustable Leveling Feet
Dimension	750 (W) x 800 (D) x 750/1200 mm (H)
Gas Connection	1/2 Inch
Gas Consumption	36.6 Kw / Hr (125.000)
Water Inlet	1/2 Inch
Power	Gas
Outlet & Drain	1 Inch