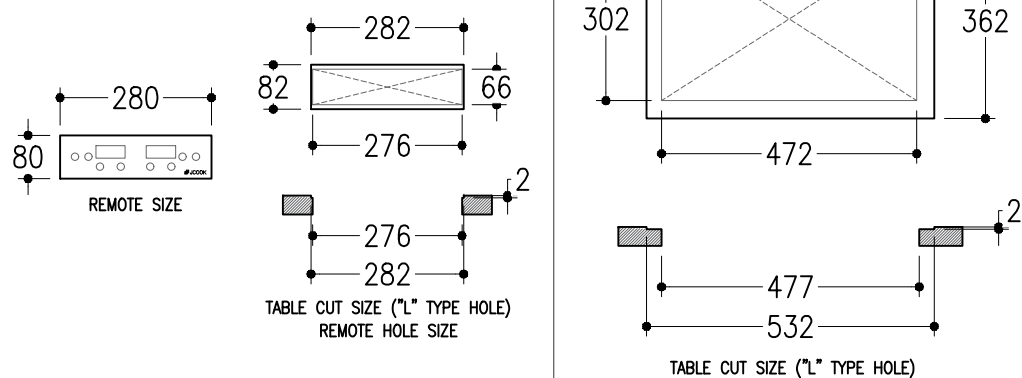
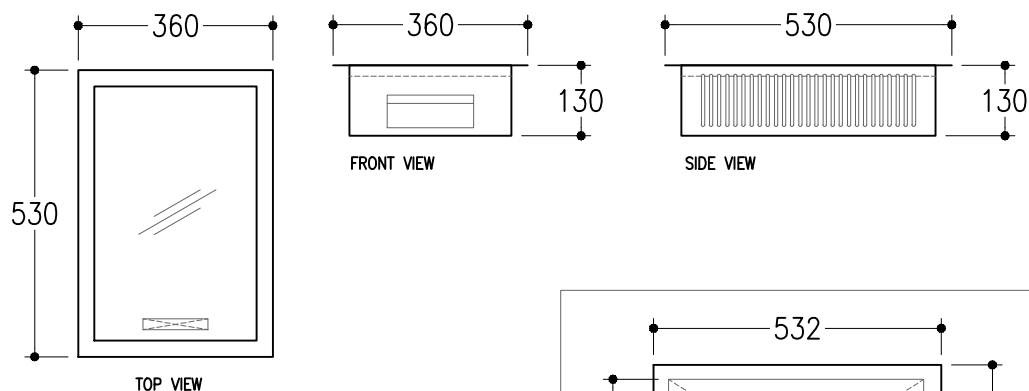
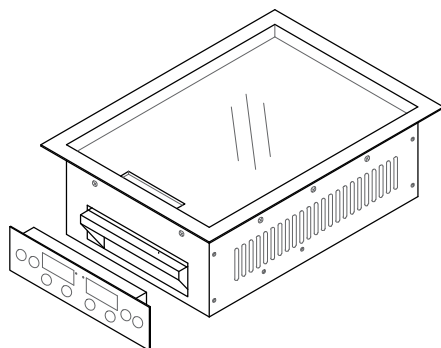


## ELECTRIC FLAT GRIDDLE



## DESCRIPTION

### Code Item

EFG-36

### Product Information

This equipment can be plant onto your marble table or even your kitchen. Equipped with digital panels to create a consistent and balance cooking. You can also cook with numerous method such as frying or even grilling. This device also come with excess tray for the leftover to provide easy cleaning after usage.

### Dimension

360 (W) x 530 (D) x 130 mm (H)

### Net Weight

20.6 Kg

### Power Comsution

1,5 Kw/Hr

### Electricity

220 V / 50-60 Hz / 1 Phase

### Power

Electricity